

MONUMENT TABLE				
☒ OF R/W C.R. 358	PROJECT COORDINATES SEE SURVEY PARAMETERS		MAG NAIL TO BE SET DURING CONSTRUCTION	
STATION	NORTH (Y)	EAST (X)	MAG NAIL	OFFSET
P.O.T. 50+00.00	408577.361	1434975.630	1	0.00 RT.
P.I. 52+43.56	408468.794	1435193.652	1	0.00 RT.
P.I. 56+05.72	408311.019	1435519.644	1	0.00 RT.
P.I. 59+55.72	408152.845	1435831.863	1	0.00 RT.
P.I. 64+64.14	407941.925	1436294.469	1	0.00 RT.
P.C. 71+72.00	407652.545	1436940.475	1	0.00 RT.
P.T. 74+33.38	407519.525	1437164.820	1	0.00 RT.
P.C. 79+94.32	407180.387	1437611.629	1	0.00 RT.
P.C. 82+57.66	406994.450	1437796.923	1	0.00 RT.
TOTAL CARRIED TO GENERAL SUMMARY SHEET			9	

P.I. = STA. 52+43.56  
Δ = 00°38'44" LT

P.I. = STA. 56+05.72  
Δ = 01°02'28" RT

P.I. = STA. 59+55.72  
Δ = 02°21'26" LT

P.I. = STA. 64+64.14  
Δ = 00°22'47" LT

MONUMENT LEGEND

- ☒ R.R.S. FOUND
- R.R.S. SET
- ⊙ P.K. NAIL FOUND
- ⊙ CONC. MONUMENT FD.
- ⊙ REFER. MONUMENT SET
- IRON PIN FOUND
- ⊙ I.P.F. WITH I.D. CAP
- ¾" BAR SET
- ⊙ PROJECT CONTROL MON.

NOTE:

THE EXISTING R/W WIDTH AND LOCATION WERE DETERMINED USING

- ROAD RECORDS, SURVEY PLATS, TAX MAPS ON FILE WITH THE HAMILTON COUNTY ENGINEER'S OFFICE

- BLOCK A, THE RESERVE OF TURPIN P.B. 309, PG. 23

- TURPIN HILLS SECTION 7 P.B. 224, PG. 44

- MERCER'S POINTE SUBDIVISION P.B. 398, PG. 25

RECEIVED _____, 20 ____
RECORDED _____, 20 ____
BOOK _____ PAGE _____
COUNTY RECORDER _____

SETTING OF ALL MONUMENTS SHALL BE PERFORMED BY A SURVEYOR REGISTERED IN THE STATE OF OHIO. THE MONUMENT ASSEMBLIES AND REFERENCE MONUMENTS WILL BE INSTALLED BY THE CONTRACTOR AT THE TIME OF CONSTRUCTION. THE IRON PIN AND CAP (WHEN REQUIRED) ARE TO BE INSTALLED BY THE CONTRACTOR'S SURVEYOR.

CHANGES OR ALTERATIONS TO THE LOCATION OF ANY MONUMENTS SHOWN IN THE TABLES BELOW, REQUIRE PRIOR APPROVAL FROM THE DISTRICT REAL ESTATE ADMINISTRATOR OF THE OHIO DEPARTMENT OF TRANSPORTATION. IN THE EVENT THAT CHANGES OR ALTERATIONS ARE APPROVED, A REVISED CENTERLINE PLAT WITH THE NEW LOCATIONS SHALL BE RECORDED IN THE APPLICABLE COUNTY RECORDS AND THE OHIO DEPARTMENT OF TRANSPORTATION. SPECIFICATIONS FOR MONUMENT ASSEMBLIES, REFERENCE MONUMENTS AND RIGHT OF WAY MONUMENTS ARE SHOWN ON STANDARD CONSTRUCTION DRAWING RM-1.1.

PROJECT CONTROL POINTS & EXISTING MONUMENTS					
C/L R/W OF C.R. 358			PROJECT COORDINATES SEE SURVEY PARAMETERS		
MON.	STATION	OFFSET	NORTH (Y)	EAST (X)	DESCRIPTION
(A)	49+67.45	38.85' RT.	408557.094	1434929.170	CNPT - "STANTEC-100"
(B)	51+45.21	416.75' RT.	408139.572	1434919.846	IPID "JRS-4513"
(C)	52+67.97	30.00' RT.	408431.156	1435202.555	IPID "HM SURVEY"
(D)	55+48.13	23.96' LT.	408357.678	1435478.240	CNPT - "STANTEC-101"
(E)	59+27.15	20.58' RT.	408147.402	1435797.074	CNPT - "STANTEC-102"
(F)	63+82.55	24.90' RT.	407953.120	1436209.900	CNPT - "STANTEC-103"
(G)	64+58.10	30.00' LT.	407971.723	1436301.419	IPID "LANSDALE"
(H)	65+01.17	30.02' LT.	407954.187	1436340.540	IPID "LANSDALE"
(J)	65+72.08	573.90' RT.	407374.051	1436158.359	1" PIPE
(K)	66+80.42	791.87' LT.	408576.184	1436815.571	CONC. MON
(L)	67+58.70	1584.12' RT.	406375.803	1435915.685	1" PIPE
(M)	68+10.51	828.75' LT.	408556.659	1436949.374	CORNER STONE
(N)	69+46.50	22.35' RT.	407724.338	1436725.542	CNPT - "STANTEC-104"
(P)	69+58.50	544.31' RT.	407243.074	1436523.114	IPID "BRUNNER"
(Q)	70+45.16	30.01' LT.	407731.782	1436836.986	1" PIPE
(R)	72+40.40	543.06' RT.	407141.258	1436750.849	IPID "ILLEGIBLE"
(S)	72+27.04	28.53' LT.	407654.290	1437003.045	1" PIPE
(T)	73+61.79	27.76' LT.	407584.113	1437121.848	1" PIPE-STEEL PLATE
(U)	73+77.83	24.87' LT.	407572.544	1437133.834	CNPT - "STANTEC-105"
(V)	74+25.49	655.69' LT.	408049.279	1437551.334	1/2" IPIN
(W)	76+48.13	760.77' LT.	407995.667	1437795.828	1" PIPE
(X)	79+31.11	22.38' RT.	407200.779	1437547.752	CNPT - "STANTEC-106"

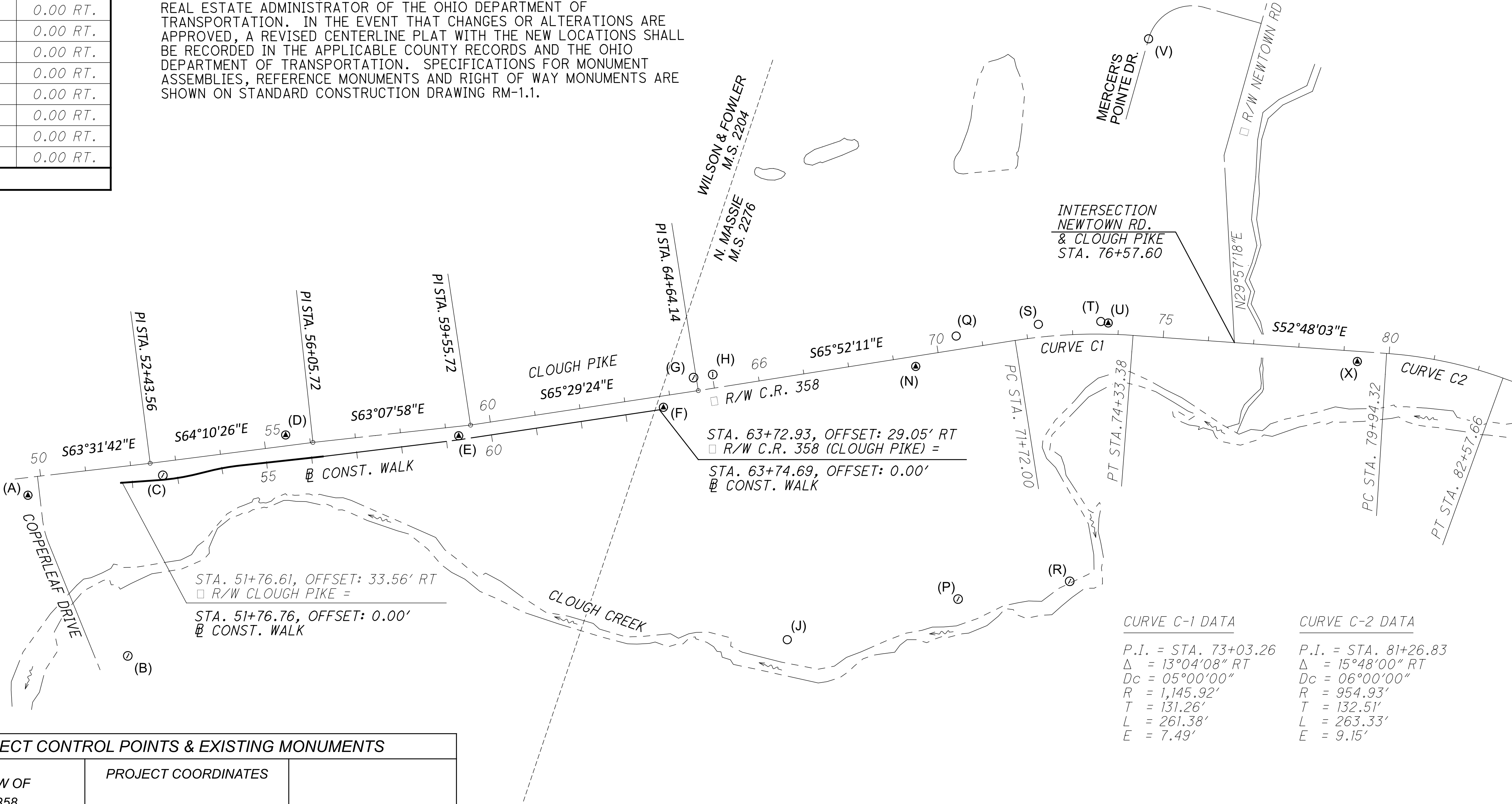
PROPOSED RIGHT-OF-WAY SHALL BE REFERENCED FROM THE CENTERLINE OF RIGHT-OF-WAY OF C.R. 358, UNLESS OTHERWISE NOTED.

BASIS FOR BEARINGS:

BEARINGS ARE BASED ON THE OHIO STATE PLANE COORDINATE SYSTEM, SOUTH ZONE, NAD 83(2011), BY ESTABLISHING A CONTROL NETWORK USING THE OHIO DEPARTMENT OF TRANSPORTATION'S OHIO REAL TIME NETWORK IN JUNE, 2023.

OHIO REAL TIME NETWORK (2011)  
ORTHOMETRIC HEIGHT DATUM: NAVD 88  
GEOID: 18  
REFERENCE FRAME: NAD 83 (2011) (EPOCH 2010.0)  
ELLIPSOID: (GRS 80)  
COORD. SYSTEM: OHIO STATE PLANE, SOUTH ZONE  
PROJECT ADJUSTMENT FACTOR = 1.0000737754  
0,0 FOR ORIGIN POINT

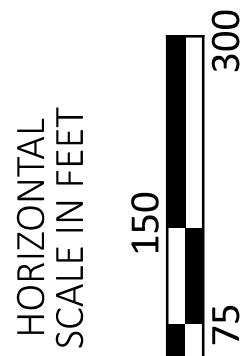
WILSON & FOWLER MILITARY SURVEY 2204  
& N. MASSIE MILITARY SURVEY 2276  
ANDERSON TOWNSHIP, HAMILTON COUNTY, OHIO



CURVE C-1 DATA	CURVE C-2 DATA
P.I. = STA. 73+03.26 Δ = 13°04'08" RT Dc = 05°00'00" R = 1,145.92' T = 131.26' L = 261.38' E = 7.49'	P.I. = STA. 81+26.83 Δ = 15°48'00" RT Dc = 06°00'00" R = 954.93' T = 132.51' L = 263.33' E = 9.15'

I, Steven E. Rader, as the Project Surveyor for Stantec have conducted a survey of the existing conditions for Anderson Township in 2023. The results of that survey are contained herein. See the Project Survey Parameters note affixed to these plans for the horizontal and vertical parameters used. I have reestablished the locations of the existing property lines and centerline of existing right of way for the property takes contained herein. As a part of this project, I have established the proposed property lines, calculated the Gross Take, Present Roadway Occupied (PRO), Net Take and Net Residue; as well as prepared the legal descriptions necessary to acquire the parcels as shown herein. The aforementioned survey work was conducted in accordance with Ohio Administrative Code 4733-37 commonly known as, "A Minimum Standards for Boundary Surveys in the State of Ohio", unless so noted. The words I and my as used herein are to mean that either myself or someone working under my direct supervision.

Steven E. Rader, P.S. No. 7191 Date



CENTERLINE PLAT

DESIGN AGENCY



10200 Alliance Road,  
Suite 300  
Cincinnati, OH 45242  
(513) 842-8200

DESIGNER

NJK

REVIEWER

SER 01/10/24

PROJECT ID

118484

SHEET

2

TOTAL

10